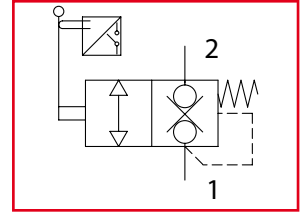
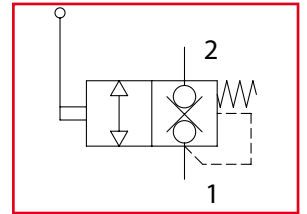




# CM6

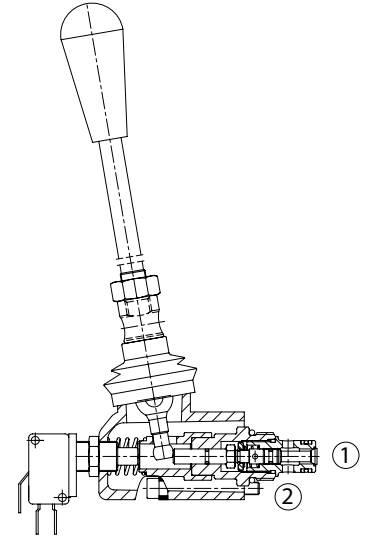
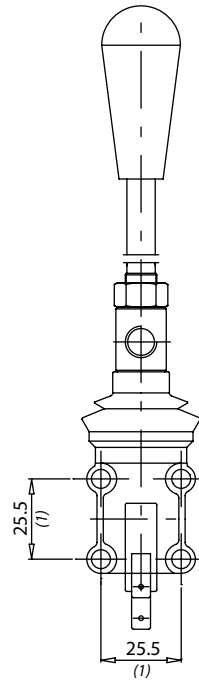
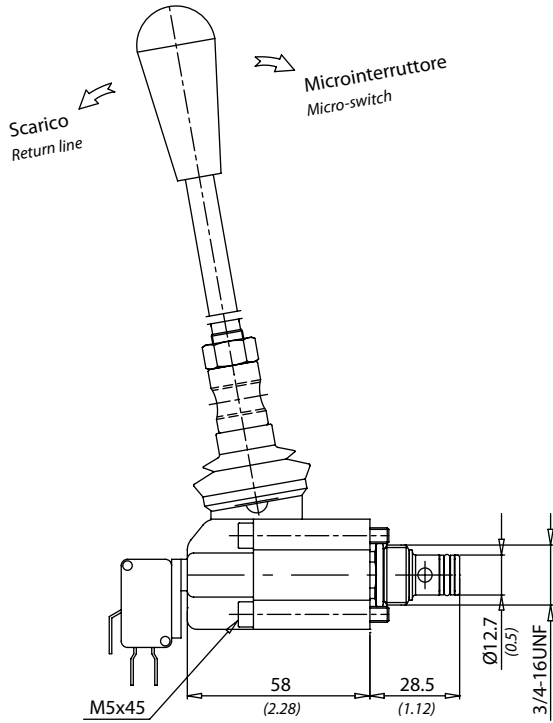
Valvole a comando manuale  
Manual operated release valves



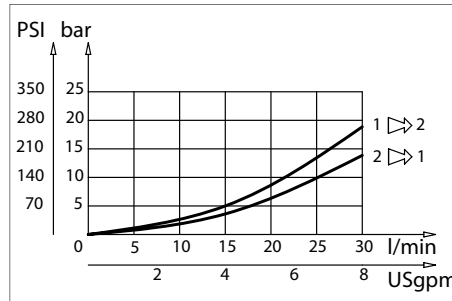
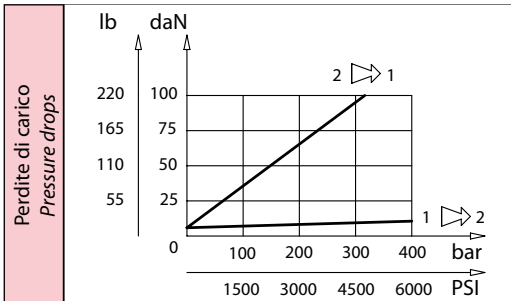
**LEHENGOK, S. A.**



Dati tecnici Technical data	
Viscosità fluido Fluid viscosity	10-500 mm <sup>2</sup> /s 45 to 2000 ssu (6 to 420 cSt)
Classe di contaminazione Filtration	ISO code 16/13 SAE class 4 or better
Temperatura fluido Fluid temperature	-20°C +80°C -4°F +176°F
Temperatura ambiente Ambient temperature	-20°C +50°C -4°F +122°F



[ mm  
(Inches) ]



Caratteristiche tecniche Technical performances					
Codice Code	Portata Max Max flow l/min - USgpm	Pressione Max Max pressure bar/PSI	Peso approssimativo Approx weight Kg / lb	Coppia di serraggio Tightening torque Nm / lbf ft	Cavità Cavity
CM6	25 (6)	320 (4500)	0,39 (0.86)	25-30 (19-22)	SAE8/2

Codice ordinazione Ordering code	
<b>CM6 - X</b>	
<b>X</b>	Microinterruttore Micro switch
<b>0</b>	Senza micro Without micro-switch
<b>M</b>	Con micro With micro-switch